



REFLECTIONS ECO-DIAGRAM

Design: Jim Spear, Diagram: Li Haixin,
Eco-point captions: Audrey Gueho

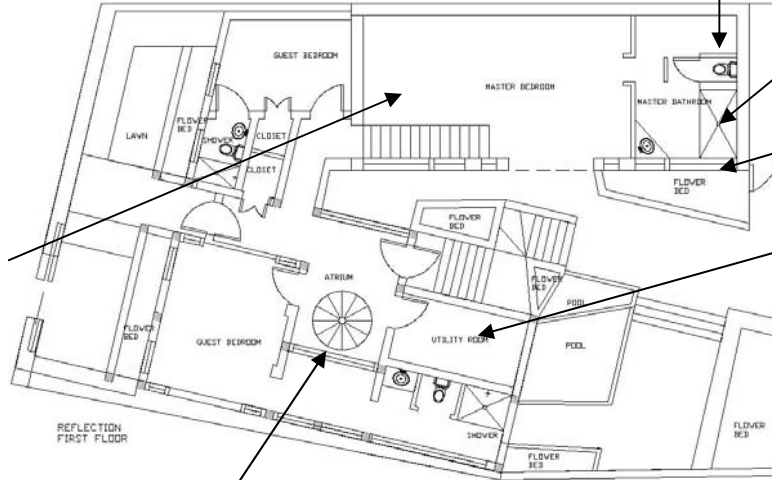


Minimization of power consumption thanks to efficient insulation, natural ventilation and radiant floor heating.



Roof windows and other big windows let us get as much natural light as possible, and reduce the use of lamps.

Using existing footprint means we avoid the consumption of energy and materials caused by new buildings, and we don't affect the traditional aspect of the village.



Recycling solid toilet waste.

Showers only to limit water consumption.

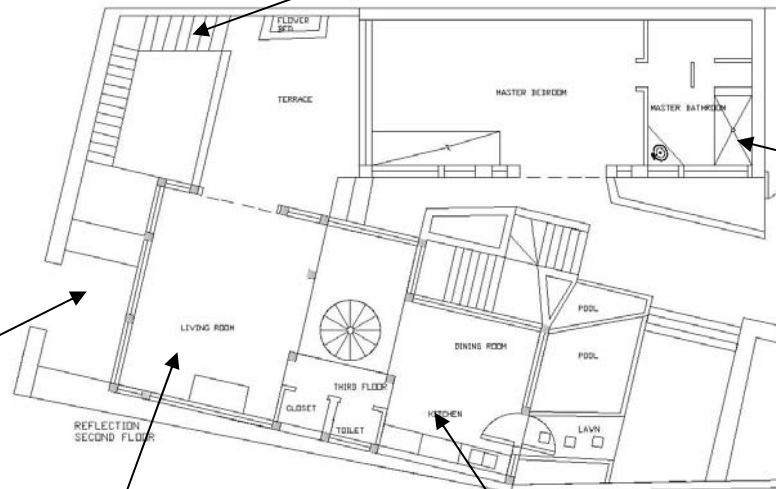


Thermal-paned windows and exterior doors to decrease energy consumption.



Minimization of power consumption by employee and seasonal adjustments.

Garden plantings limited to native flora let protect biodiversity.



Limiting waste by avoiding pre-packaged amenities.



Limiting linen's changes as often as possible.

Washable cookware only.